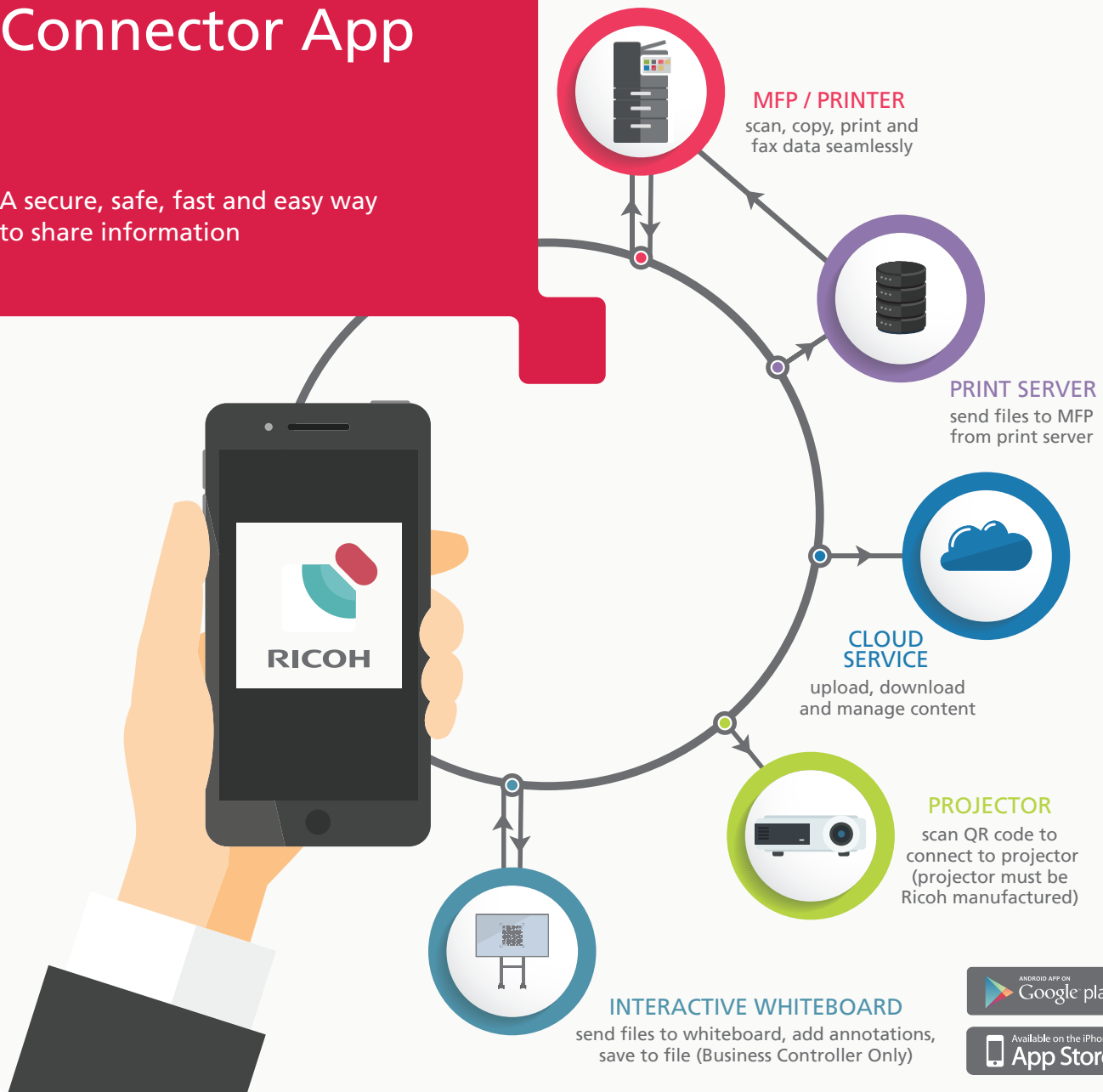


# RICOH Smart Device Connector App

A secure, safe, fast and easy way  
to share information



## Operate your MFP without touching the screen

RICOH Smart Device Connector App lets you quickly access a RICOH multifunction printer (MFP), print server, cloud services, projector or interactive whiteboard by registering it with a smart device via Bluetooth Low Energy, a QR code, or the IP address or host-name of an MFP. Specify copy, fax, and scan settings, choose the number of copies; B&W or colour; single or double-sided printing and save your settings to speed the completion of future jobs.

Download the RICOH Smart Device Connector App on the App Store or on Google Play for free.